

**More than a better wall.**

**A BETTER WAY**

Koreteck's Building Envelope System is a complete wall system that drives efficiency into your building's design, construction, and energy performance.

Composed of a 20-gauge steel core insert molded into expanded polystyrene (EPS) and custom engineered to your project's specifications, Koreteck's Building Envelope System provides a better barrier against air flow, moisture infiltration, noise transmission, and energy loss than conventional block, tilt, or stud walls.

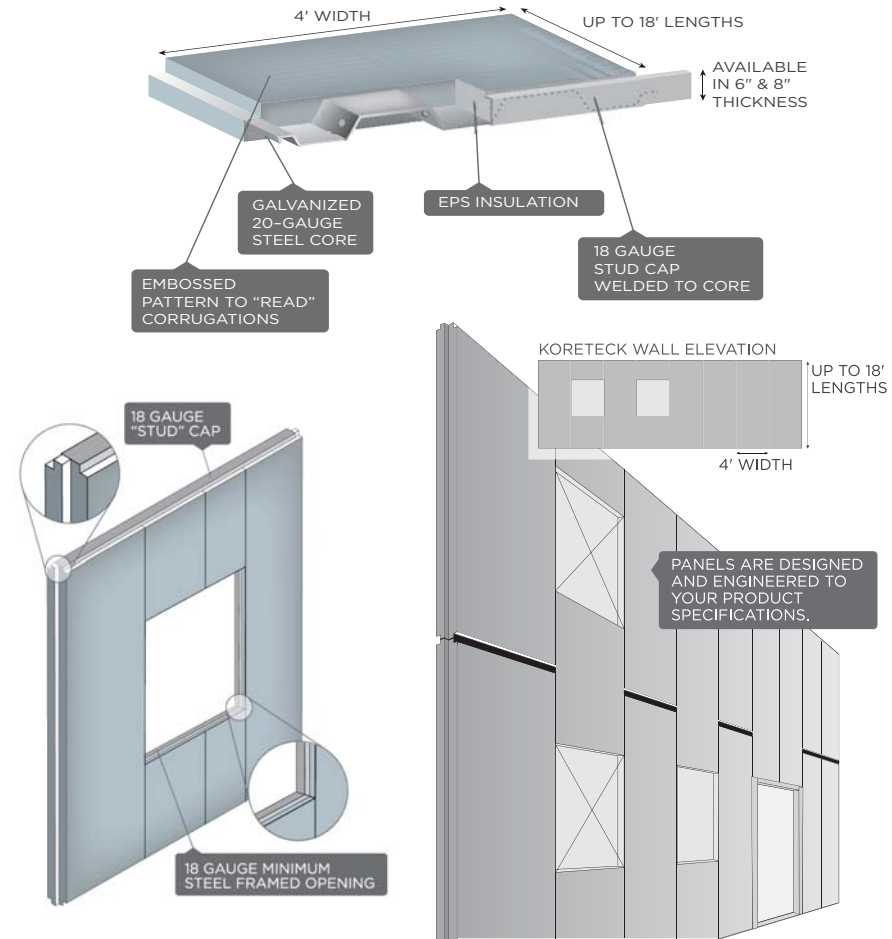
Koreteck's Building Envelope System can be easily integrated into your blueprint and your building, without compromising your creative vision. Our Building Envelope System accepts most interior and exterior finishes and coverings.

**GOOD FOR OUR ENVIRONMENT, GOOD FOR BUSINESS.**

New revisions to the ASHRAE/IESN 90.1 standards for 2010 aim to increase building energy efficiency by 30 percent, with a long-term goal of net-zero energy buildings in 2030.



**KORETECK PROFILE**



**SPEED**



**GET TO BUSINESS. FASTER.**

Koreteck's Building Envelope System streamlines the framing process, replacing three steps - frame, exterior sheath, and insulation - with one monolithic panel.

Engineered to your project's specifications, our Building Envelope System is a series of interconnected panels that installs rapidly:

- 18-foot high (stackable for greater heights)
- 1-1/2 to 4 feet wide
- 6 or 8 inches thick
- 2 to 3 pounds per square foot

Lightweight and easy to handle, installation requires only a small trained crew and minimal equipment.

With installation rates at more than 750 square feet per hour, your building is enclosed faster, allowing the interior trades and exterior finishers to make progress that much sooner. Our independent studies have shown that our system installs **THREE TIMES FASTER** than concrete masonry unit CMU and twice that of traditional stud walls.

Our Building Envelope System compresses the entire building schedule, substantially reducing your project's timeline and overhead cost.

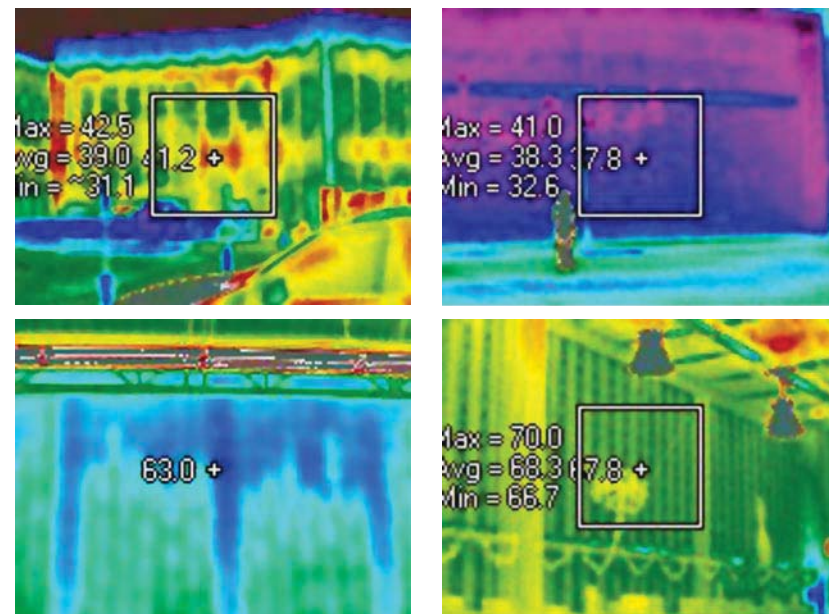


**INSTALLATION TIME**

TRADES	WEEK 1	WEEK 2	WEEK 3	WEEK 4
<b>TRADITIONAL</b>				
Stud	[Progress bar]			
Sheathing	[Progress bar]			
Insulation (Blanket)	[Progress bar]			
EIFS Prep	[Progress bar]			
<b>BLOCK</b>				
Block	[Progress bar]			
EIFS Prep/ Interior Finish	[Progress bar]			
<b>KORETECK</b>				
KORETECK SYSTEM	[Progress bar]			
Coating Prep	[Progress bar]			
			[Red bar labeled TIME SAVED]	

**ENERGY EFFICIENCY**

**HEAT LOSS Conventional -vs- Koreteck Construction**



**CONVENTIONAL BLOCK** **KORETECK**

top: exterior bottom: interior photos taken the same day, in Colorado Springs, CO

**CONSERVE ENERGY.**

According to the Department of Energy, 60% of energy loss is attributed to air leakage and heat transfer in the building envelope.

Koreteck's unique patented design eliminates thermal breaks, a common issue with conventional wall methods.

Koreteck's Building Envelope System, available in 6- and 8- inch thicknesses, delivers steady-state R-values of 24.8 and 33.1, not just in theory, but in the field. Stud and block walls can't compete with our Building Envelope System's ability to consistently and continuously seal your building against air and moisture, regardless of temperature or humidity.

But high R-values aren't the whole story. Our system optimizes your energy performance through your building. Koreteck's Building Envelope System delivers demonstrated energy savings, as independently verified by owners, utility companies, and building envelope consultants.

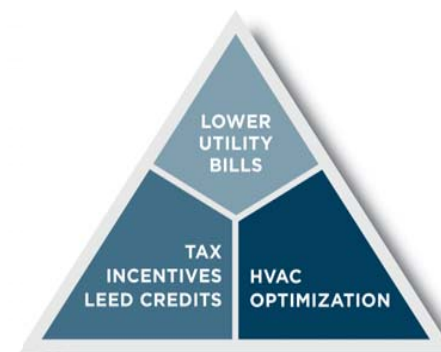
Koreteck's Building Envelope System provides an air, vapor, and moisture barrier that also:

- reduces HVAC loads
- meets future energy savings requirements
- helps qualify for \$0.60 per sq. ft. tax deduction
- improves the U-value resistance for the building envelope, increasing the contribution towards Energy and Atmosphere points for LEED certification.

**30% ENERGY SAVINGS**

When integrated into a total energy-efficient plan, our Building Envelope System has reduced our clients' energy consumption by as much as 50%.

Energy Star reports that reducing energy by 30% translates to an increase net operating income of 5%.



**SUSTAINABILITY**

**KORETECK CONTRIBUTES TO 3 IMPORTANT LEED CATEGORIES**

**ENERGY & ATMOSPHERE**

Points are assigned based on energy savings and use of alternative sources

**MATERIALS & RESOURCES**

Points are given for recycling and waste management as well as for use of existing and regional materials

**INNOVATION & DESIGN PROCESS**

Points are given for innovation in designing for Green Buildings

**LEED APPLICANTS PROVIDED UP TO 40% GREATER PERFORMANCE**

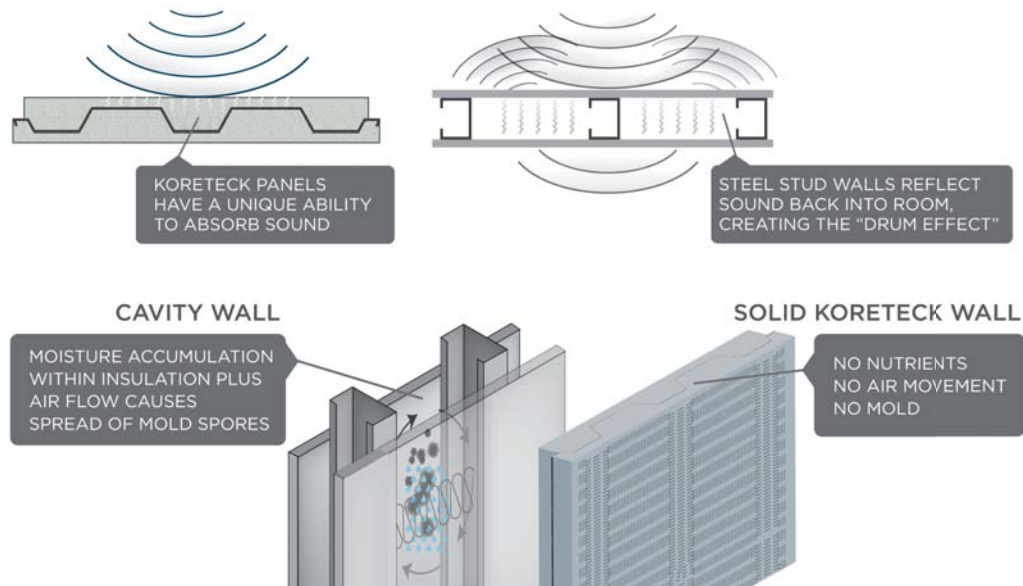
Koreteck's U-Value Resistance has provided LEED building applicants up to 40% greater performance than the baseline models used to determine Energy and Atmosphere points awarded.

**MORE RECYCLED CONTENT THAN ANY OTHER WALL**

Comprised of only two materials: STEEL - the world's most recyclable building material, and EPS - which Koreteck captures and reprocesses for other uses, Koreteck provides more recycled content than any other wall.



## NOISE REDUCTION & MOLD RESISTANCE



### REDUCE NOISE.

A quieter working environment is a productive and private one. And Koreteck's Building Envelope System provides your building with superior sound management.

Our Building Envelope System enhances your building's acoustical performance by absorbing higher-decibel noises such as voices, traffic, and office equipment. More sound is absorbed, less sound is transmitted, and interior spaces are quieter, creating an environment that is more productive and more compliant with HIPAA privacy standards.

### RESIST MOLD.

Koreteck's solid wall system eliminates nutrients and air movement, reducing the possibility of mold growth within the wall.

## THE SYSTEM

### KORETECK INSTALLATION

Koreteck offers installation services, however, we can train your team in just two days. The Koreteck Panelized Building System may only be installed by Koreteck certified installers. The Installation Training and Certification Course is available nationwide. In it, Koreteck offers builders a comprehensive training experience. This day-long course combines both classroom and hands-on exercises, providing participants with a better understanding of the Koreteck System as well as its proper installation.

### CERTIFIED AND TESTED

Koreteck wall panels have been independently tested for structural, fire, vapor transmission, and sound transmission characteristics. These specific tests are:

- UBC 26-9/NFPA-285 - flammability characteristics for non load bearing wall assemblies
- UL 263/ASTM E-119/NFPA-251 - one- and two-hour fire rated assemblies
- ASTM E-96 - standard test method for water vapor transmission
- ASTM E-90 - standard test method for airborne sound transmission loss (STC)
- Miami-Dade Co, FL for use in high-velocity hurricane zones of the Florida Building Code, NOA No. 04-1103.5
- Florida State wide Product Approval, Florida No. FL13003
- ASTM E1592 - Structural Performance of Sheet Metal Systems
- ASTM E72 - Strength Test of Panels for Building Construction



## THE COMPANY

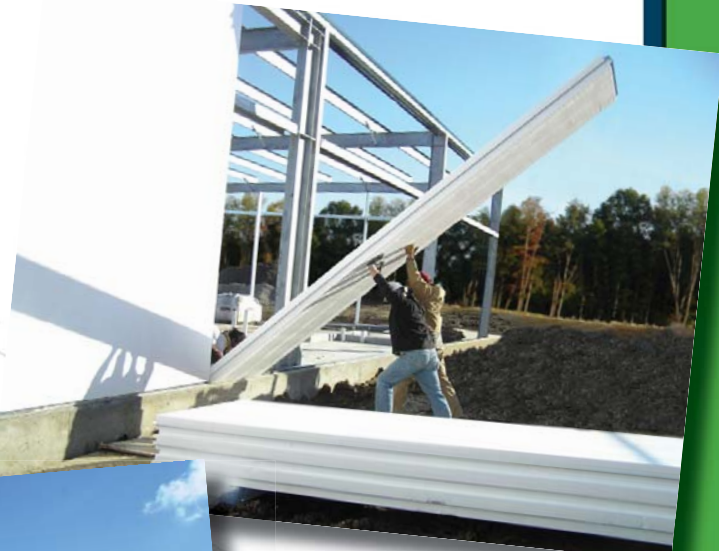
Koreteck began operations in 2002. During this time the system was incubated with the experience and influence of not only the world's most preeminent building system manufacturers, but also with one of the leading Design/Build Builder Organizations.

Koreteck now proudly enters a new phase of its existence as a complete system, market ready and proven on over 400 projects with an ownership group made up of and committed to Building Owners, Architects, and Construction Professionals.

Our vision now is to share the speed, energy efficiency, and multitude of other benefits of the Koreteck System with the greater building community through enhancing the in-place experience; from panel installation through finish application.



PH 866-877-8335  
FX 540-248-1170  
koreteck.com



Koreteck®